

# NANOCAM+<sup>®</sup>

NCP-DVR3CH

Your Safety. Our Priority



## USER MANUAL

3-Channel Front, Rear, and In-Cabin  
FHD Dash Camera with GPS, WiFi and DMS

## CONTENTS

<b>1.0</b>	<b>CAUTIONS</b> .....	<b>3</b>
<b>2.0</b>	<b>WARNING</b> .....	<b>3</b>
<b>3.0</b>	<b>MICRO SD CARD WARNING</b> .....	<b>4</b>
3.1	FORMATTING THE INSERTED MICRO SD CARD.....	5
<b>4.0</b>	<b>INTRODUCTION</b> .....	<b>6</b>
<b>5.0</b>	<b>PACKAGE CONTENTS</b> .....	<b>6</b>
<b>6.0</b>	<b>PRODUCT OVERVIEW</b> .....	<b>7</b>
6.1	BUTTON FUNCTIONS.....	8
<b>7.0</b>	<b>BEFORE INSTALLING YOUR DASH CAMERA</b> .....	<b>8</b>
7.1	INSERTING THE MICRO SD CARD.....	8
7.2	FITTING THE GPS MOUNT TO THE DASH CAMERA .....	9
<b>8.0</b>	<b>INSTALLATION INSTRUCTIONS</b> .....	<b>10</b>
8.1	NCP-DVR3CH INSTALLATION.....	10
8.2	INSTALLING THE REAR CAMERA.....	11
8.3	REAR CAMERA WIRING DIAGRAM .....	12
8.4	REAR CAMERA FEATURES .....	13

8.5	LED INDICATOR .....	13
<b>9.0</b>	<b>USING YOUR DASH CAMERA .....</b>	<b>14</b>
9.1	FORMATTING THE INSERTED MICRO SD CARD.....	14
9.2	SETTING THE DATE AND TIME.....	15
9.3	SCREEN INTERFACE WHEN RECORDING .....	16
9.4	SCREEN INTERFACE WHEN IN PLAYBACK .....	17
9.5	SETTINGS MENU .....	17
9.6	SYSTEM SETTINGS .....	18
<b>10.0</b>	<b>DOWNLOADING AND INSTALLING THE NCP-VIEW APP.....</b>	<b>21</b>
<b>11.0</b>	<b>NCP-VIEW APP OPERATION .....</b>	<b>23</b>
11.1	APP VIDEO PLAYBACK.....	24
11.2	DOWNLOADING VIDEOS FROM THE APP.....	25
11.3	SHARING VIDEOS ON SOCIAL MEDIA.....	25
11.4	NCP-VIEW APP SETTINGS .....	26
<b>12.0</b>	<b>DRIVER MONITORING SYSTEM.....</b>	<b>27</b>
<b>13.0</b>	<b>WARRANTY TERMS AND CONDITIONS .....</b>	<b>28</b>
<b>14.0</b>	<b>NOTES .....</b>	<b>33</b>

## **1.0 CAUTIONS**

- Please ensure you are using your Dash Camera within your country's road laws. Please make sure you are familiar with your local road legislation before use.
- The time and date needs to be set before you start recording.
- The notifications provided by this Dash Camera are to be used as a guide only. Please drive according to the actual conditions on the road.
- The system is for non-commercial use only, and within the limits permitted by the relevant laws.
- Avoid using the Dash Camera in the vicinity of any devices that emit radio interference (eg. microwave ovens).
- Please note that it is normal for the Dash Camera to get warm during use.

## **2.0 WARNING**

- Always power the Dash Camera using the provided charger.
- Never dismantle the Dash Camera.
- Do not dispose of the Dash Camera in fire.
- Disposal of the Dash Camera should observe local regulations.

### **3.0 MICRO SD CARD WARNING**

This Dash Camera can only be used with Micro SD Cards, Class 10 or above with 32GB - 128GB storage capacity (this is not included and will need to be purchased separately). Please format your Micro SD card before use.

**NOTE:**

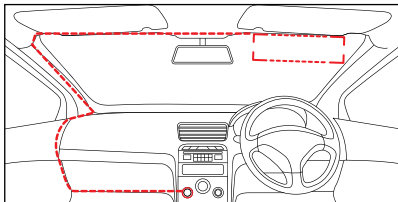
Formatting the Micro SD card will delete all information on the inserted Micro SD Card and prepare the card for use with the Dash Camera.

### 3.1 FORMATTING THE INSERTED MICRO SD CARD

Please download the NCP-VIEW app and connect your Dash Camera with the downloaded app by following the steps as mentioned on page 21.

#### NOTES ON INSTALLATION

1. For best results with the Drive Monitoring System (DMS) we recommend that the Dash Camera be installed near the driver side of the windscreen perpendicular to eye level. If DMS is not required, we recommend that the Dash Camera be installed near the rear view mirror, or at the top centre of the windscreen for best results, making sure the internal camera is not obscured by the mirror.
2. Make sure the lens is within the range of the windscreen wiper, so there is a clear line of view when it rains.
3. Do not touch the lens. Fingerprints on the lens will result in unclear videos or photos. If your photos or videos are blurred, this may be solved by cleaning the lens gently with a microfibre cloth.
4. Please use only the included charging cable to power the Dash Camera. Other cables may not work or may damage the camera.



## 4.0 INTRODUCTION

Thank you for purchasing a Nanocam Plus Dash Camera. We have developed this product so you can have a better driving experience with enhanced safety features. Our products, like most after-market safety enhanced devices, are designed to assist and aid the driver, and not to replace the manual function of the person operating the vehicle. Please read through these instructions before attempting to install this product.

For the latest manual and product updates, please visit our website at [www.nanocamplus.com.au](http://www.nanocamplus.com.au) or [www.nanocamplus.co.nz](http://www.nanocamplus.co.nz)

## 5.0 PACKAGE CONTENTS



NCP-DVR3CH  
Dash Camera x1



Rear  
Camera x1



12/24V Power  
Adapter x1



3M  
Mount x1



Electrostatic  
Film x2

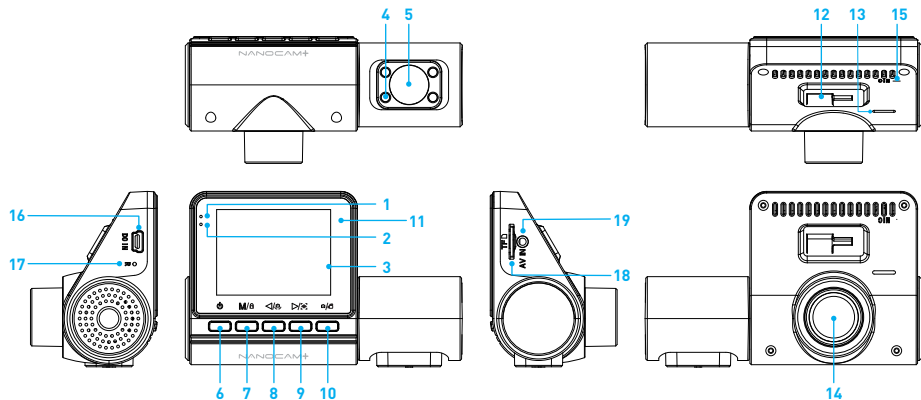


8M Rear  
Camera  
Cable x1



User  
Guide x1

## 6.0 PRODUCT OVERVIEW



- |                            |                                  |                                    |
|----------------------------|----------------------------------|------------------------------------|
| 1. Power Indicator LED     | 8. Previous/Camera Switch Button | 14. Front Camera Lens              |
| 2. Recording Indicator LED | 9. Next/DMS button               | 15. Microphone                     |
| 3. Display Screen          | 10. Take Picture/Confirm Button  | 16. Mini USB Connector (for power) |
| 4. Infra Red LED           | 11. Light Sensor                 | 17. Reset Button                   |
| 5. In-Cabin Camera         | 12. 3M Mount Slot                | 18. Micro SD Card Slot             |
| 6. Power Button            | 13. Speaker Vent                 | 19. Rear Camera Input              |
| 7. Menu/Lock Button        |                                  |                                    |



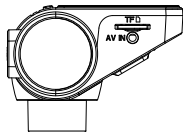
## 6.1 BUTTON FUNCTIONS

BUTTON	FUNCTIONS
Power button	Long press to power on/off, Short press to turn on/off the display. (Recording will continue)
Menu/Lock button	Short press to enter into menu when in standby /not recording mode. Short press to lock the video when recording . Long press to switch modes between video /video playback/ protected videos playback/parking videos playback/picture. In menu/playback: Short press to exit menu.
Previous/Camera Switch button	In video mode: Short press to switch the camera modes. In menu/playback: Toggle the menu up or previous.
Next/DMS button	In video mode: Short press to turn on/off DMS function. Long press to start DMS calibration In menu/playback: Toggle the menu down or previous. Long press to delete the current file
Take Picture/ Confirm button	In video mode: Short press to take/stop video. Long press to take photo. In menu/playback: Confirm.
Reset	Press this button to restart the device. All pre saved information will be lost.

## 7.0 BEFORE INSTALLING YOUR DASH CAMERA

### 7.1 INSERTING THE MICRO SD CARD

Please insert the memory card into the Micro SD Card slot with the chip contact surface facing up. Insert it until your hear a click sound.



## 7.2 FITTING THE GPS MOUNT TO THE DASH CAMERA

### 1. **3M Tape**

Please remove the 3M tape and place the mount onto your windscreen.

### 2. **Power Socket**

Please insert your 12V power adaptor cable into this socket to power the GPS mount unit.

### 3. **Dash Camera Mounting Lock**

Please insert the mounting lock into the 3M mounting lock at the back of camera and slide the Dash Camera from left to right to lock.

### 4. **Dash Camera Power Connection**

Please insert this cable into your Dash Camera's USB socket on top. This will power your Dash Camera for use.



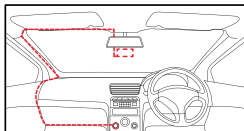
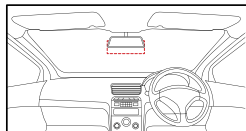
### **NOTE**

When removing the GPS mount from your windscreen, gently twist the module bracket to the left (unlocked) position until the 3M tape and bracket become loose from the windscreen.

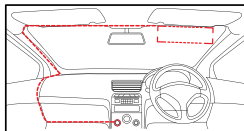
## 8.0 INSTALLATION INSTRUCTIONS

### 8.1 NCP-DVR3CH INSTALLATION

1. **OPTIONAL:** The electrostatic film helps for easy removal of the Dash Camera from the windscreen and is included in package contents. Select the electrostatic film from the box and install it on the front windscreen in the recommended position as shown. Please wipe the glass before installation and push out any bubbles between the static film and the glass before installation.
2. Remove the protective film from the NCP-DVR3CH mounting bracket and position the Dash Camera in the middle of the electrostatic film (optional). Press down on the base of the bracket by hand for 30 seconds to ensure that the adhesive is attached to the electrostatic film. Adjust the camera until its lens is capturing the entire road.
3. Run the Dash Camera charging cable along the top of the front windscreen through the A pillar and around and under the storage compartment of the passenger seat to the car's 12/24V adaptor port. Connect the 12/24V adaptor to the car power.



\* If not using DMS function



\* If using DMS function

## 8.2 INSTALLING THE REAR CAMERA

1. **OPTIONAL:** Select the electrostatic film from the box and install it on the rear windscreen in the recommended position as shown on page 12. Please wipe the glass before installation and push out any bubbles between the static film and the glass before installation.
2. Remove the protective film from the rear Camera base bracket and select either the top or the bottom of the rear window to position the rear Camera. Press down on the base of the bracket by hand for 30 seconds to ensure that the sticker adhesive has attached to the electrostatic film.
3. Connect the rear Camera to the front Dash Camera using the cable provided. Either run the cable through the roof lining or under the carpet underlay as shown on page 12. The rear Camera can rotate 360° depending on the position and type of installation method.

**Method 1:** Thread the rear Camera cable along the top of the roof lining and connect it to the Dash Camera.

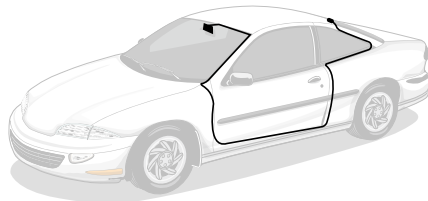
**Method 2:** Lift up the car carpet and run the rear Camera cable along the underlay of the carpet and connect it to the front Dash Camera.

4. Adjust the rear Camera by rotating the barrel until it is capturing the entire road.

### **NOTE:**

While viewing your live footage on the Dash Camera, the rear Camera will show the true rear view image where the licence plates of vehicles behind your vehicle will be inverted. Actual recorded images are horizontally flipped to capture the licence plate correctly.

### 8.3 REAR CAMERA WIRING DIAGRAM



**NOTE:**

The rear Camera must be mounted inside the car as it is not waterproof.

## 8.4 REAR CAMERA FEATURES

After successfully installing and connecting the rear Camera to the front Dash Camera, the rear Camera image will be displayed on the front Dash Camera's 2.0" IPS screen. All 3 Cameras will instantaneously start recording after the Dash Camera is powered on. Both front and in-cabin Dash Camera images will now be displayed on the left of your Dash Camera's 2.0" Screen, while the rear Camera images will be shown on the right of the screen. You can switch between screens by pressing the Previous/Camera Switch Button.

The Camera Display can switch between cameras and show the following:

- Full front Dash Camera view
- Full rear Camera view
- Full in-cabin Dash Camera view
- Half front Dash Camera and quarter in-cabin Dash Camera and rear Camera views

## 8.5 LED INDICATOR

- A flashing blue light indicates that recording is in progress.
- A constant blue light indicates not recording.
- A constant flashing red light indicates the internal battery is charging.

### **NOTE:**

The Dash Camera is designed to be constantly powered by the included DC power plug. The internal battery is designed to hold saved settings and power the Dash Camera when in park mode. The battery is NOT designed for primary use.

## 9.0 USING YOUR DASH CAMERA

When the Dash Camera is correctly installed and connected to your vehicle's 12/24V power supply, and the ignition is turned on to 'accessories', the Dash Camera will automatically turn on and start recording.

### 9.1 FORMATTING THE INSERTED MICRO SD CARD

It is highly recommended you format the Micro SD card before use.

**NOTE:**

Formatting the Micro SD Card will delete all previously saved information on the inserted card, and prepare the card for best use with the car Dash Camera.

To format follow the steps below:

5. Press the Take Picture / Record button
6. Press the Menu/ lock button.
7. Scroll down the menu using the forward and backward key until you reach Format.
8. Press the Confirm button and press confirm again.
9. The Micro SD card will now be formatted and be ready for use.
10. Press > twice to arrive at the Format SD Card option which will now be highlighted in blue.
11. You can also format your Micro SD card via the NCP-VIEW app.

## 9.2 SETTING THE DATE AND TIME

This step is vital, as the correct date and time will be stamped on your recorded video files, and their accuracy can be particularly important in an insurance claim. Please follow the steps below carefully.

How to set the date and time:

1. Press the Take Picture / Record button
2. Press the Menu/ lock button.
3. Scroll down the menu using the forward and backward key until you reach Date and Time
4. Press Confirm
5. Change the year, month, date and time by pressing Confirm. After confirming, the setting will move to the adjacent setting and the text will change to red to help in the selection.
6. Press the Menu/Lock Button to exit.



### 9.3 SCREEN INTERFACE WHEN RECORDING

1. Recording Indicator:  
The red dot will flash when your Dash Camera is recording.
2. Recording time:  
Shows the duration of the recording.
3. DMS enabled
4. Wi-Fi:  
If your Dash Camera is not connected to Wi-Fi it will have a strike through the icon.
5. GPS enabled
6. G-Sensor enabled
7. Audio Recording On/Off
8. Micro SD Card
9. Charging status
10. Date
11. Time



## 9.4 SCREEN INTERFACE WHEN IN PLAYBACK

1. Stop recording by pressing the Confirm button.
2. Long press the menu button to access the normal video playback/ picture gallery/locked videos / parking videos.
3. All files can be accessed by pressing the Previous and Next button.
4. Long press the previous button to lock video.
5. Long press the next button to delete video.
6. Press the Menu button again to exit the Playback menu.



1. Recorded file name
2. File number

## 9.5 SETTINGS MENU

System settings allow you to adjust the Dash Camera settings, format Micro SD cards, perform a factory reset and offers you the QR code to scan and download the NCP-VIEW app.

## 9.6 SYSTEM SETTINGS

NAME	FUNCTION	OPTIONS	DEFAULT	NOTE
Format SD card	Formats the Micro SD card			Deletes all recorded data from the micro SD Card
Wi-Fi On/Off	To turn on/off Wi-Fi with the Dash Camera	On/Off	On	
Wi-Fi info	Provides the Wi-Fi SSID and Password information			
G-sensor	The G-Sensor monitors your vehicle against impact. The dash camera will automatically lock the recording in the event of a collision. Turn off or adjust the sensitivity of the built in G-Sensor	Off/Low/Medium/High	Low	A higher sensitivity means more videos will be stored in the emergency folders. Even a hard door closure will be saved as an emergency file in high sensitivity mode.
Loop recording	Loop recording allows you to set the duration that the camera will record before creating a new clip	1/3/5 Minutes	1 Minute	
Licence plate stamp	To stamp the licence plate on the recorded footage	On/Off	Off	
Volume	To increase or decrease the volume of alerts	Low/Medium/High/Off	Low	
Driver monitoring System	Gives an alert analysing driver behaviour	On/Off	Off	

NAME	FUNCTION	OPTIONS	DEFAULT	NOTE
DMS settings	Fatigue/Inattention/Smoking/ Phone use	On/Off	Off	
Audio recording	Turns the microphone On/Off	On/Off	On	Turning off will leave no audio recording on the recorded footage
Date and time setting	Adjusts the date and time on the time stamp		On	
Time format	Set the time in 12 Hr or 24 Hr format	12/24 Hr	12 Hr	
Keypad volume	Turns the keypad volume on/off	On/Off	On	
Power on sound	Provides sound when the DVR is powered on	On/Off	Off	
Factory settings	Restore factory settings			
About Dash Camera	Provides the model name and firmware version			
GPS info	Provides the GPS information and the number of satellites latched to			Only when GPS signal is available
GPS switch	Turns the GPS on/off	On/Off	On	Speed and position coordinates will not be stamped on the footage
Rear camera display	To switch display on the screen to mirror/ normal image	Mirror/ Normal	Mirror	Will re-record in "non-mirror image" to read licence plates

NAME	FUNCTION	OPTIONS	DEFAULT	NOTE
Rear camera flip	To flip the rear camera image display on the screen and recorded footage	Off/On	Off	
Volume	Low/Medium/High	Low/ Medium/ High		
DMS alerts	Off/On	Off/On		
Microphone	On/Off	On/Off		
Languages	To select language	To select language		
Time lapse	To turn on/off time lapse mode	On/Off	Off	Requires a 3-wire wire hardwire kit. When time lapse mode is turned on and the car detects the engine is off, the recording will be done in time lapse mode. This is to save memory space when the car is parked .
Time lapse duration	To change the duration of time lapse mode	2 hours/ 8 hours / 12 hours / 24 hours/ Always on	Always on	To select the duration of the time lapse mode when the car is parked . Car will stop recording after the time lapse duration . If set to Always on, the time lapse mode will remain on until ignition is turned off.

## 10.0 DOWNLOADING AND INSTALLING THE NCP-VIEW APP

The NCP-DVR3CH needs to be used in combination with the NCP-VIEW app to function correctly.

All major settings on the NCP-DVR3CH are accessed through the NCP-VIEW app. The system requirements for your smartphone are featured below:

**iPhone:** Phones with iOS 9.0 and above.

**Samsung Galaxy:** Phones with Android 8 and above.

To correctly connect your smart device to your NCP-DVR3CH, you will need to download the NCP-VIEW app from the App store. You will also need to connect your smartphone to the NCP-DVR3CH's Wi-Fi signal using your smartphone's Wi-Fi settings.

### **For Android devices**

Please search NCP-VIEW in the Google Play Store for installation. Alternatively you can scan the QR code found in the "About Dash Camera" settings in your Dash Camera. You can also scan the QR code on the following page.

### **For iOS devices**

Please search NCP-VIEW in the iOS App Store for installation. Alternatively you can scan the QR code found in the system settings in your Dash Camera. You can also scan the QR code on the following page.

For a step by step guide on connecting to your Dash Camera, please follow the steps below.

1. On your smart device, download the NCP-VIEW app from the Google Play store if you are using an Android device, or the iOS App Store if you are using an iPhone. You can also scan the QR code below.
2. Power up the NCP-DVR3CH and turn on the Wi-Fi from the settings.
3. Once the app is downloaded and installed on your smartphone and the Dash Camera is powered up, open your smartphone's Wi-Fi settings and connect to the wireless connection named NCPDVR3CH\_XXXX. (XXXX is the unique number for every Dash Camera).
4. When prompted, enter the password 12345678  
**Wi-Fi Name:** NCP-DVR3CH  
**Password:** 12345678
5. Once the connection has been made, open the NCP-VIEW app. You will now be able to access the live recording screen for stored videos, and Dash Camera settings.
6. Scan the QR code below to download the NCP-VIEW app from the Google Play or iOS App Store.

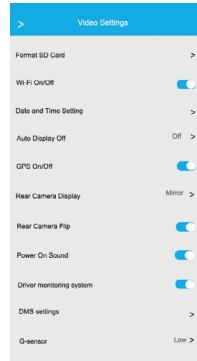
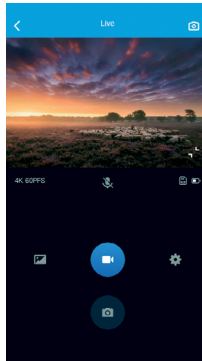


## NOTE:

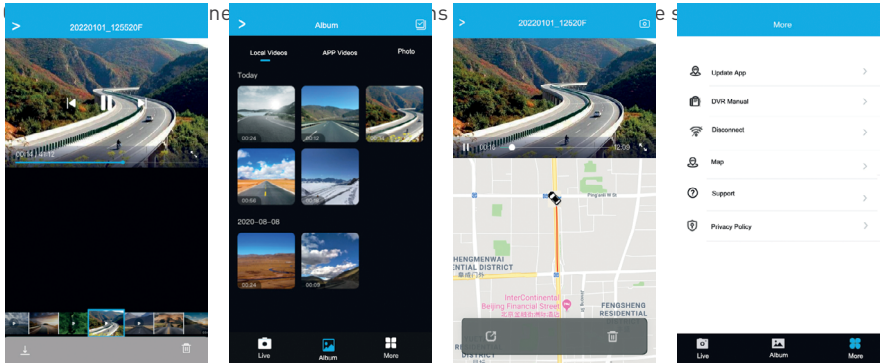
1. To ensure that the DVR pairs with your smartphone properly, please turn on the DVR and keep the smartphone in close proximity to the DVR for successful pairing via Wi-Fi.
2. The DVR will need to be continuously powered on to maintain the connection with your smartphone.

## 11.0 NCP-VIEW APP OPERATION

To use the NCP-VIEW app, your smart device will need to be connected to the Dash







## 11.1 APP VIDEO PLAYBACK

For video playback, please follow the instructions below.

1. Open the NCP-VIEW app.
2. Press the Album button.
3. Click on the Video Folder and select the video you want to view.

## **11.2 DOWNLOADING VIDEOS FROM THE APP**

To download your Dash Camera videos, please follow the instructions below.

1. Open the NCP-VIEW app.
2. Press the Album button.
3. Select the video/videos and press the download button.
4. The download will start and will save to your smartphone which can also be accessed through the NCP-VIEW app in the folder named Local.

## **11.3 SHARING VIDEOS ON SOCIAL MEDIA**

To share videos on social media, please follow the instructions below.

1. Open the NCP-VIEW app.
2. Press the Album button.
3. Open the Local folder on the NCP-VIEW app.  
All downloaded files can be accessed via the Local folder.
4. Select the files you want to share, and then press the share button.
5. Select the social media application you wish to share on.

## 11.4 NCP-VIEW APP SETTINGS

MENU	SETTING	DESCRIPTION
Microphone	On, Off	Turns microphone on/off
Speed camera alerts	On, Off	Turns speed camera alerts on/off
Loop recording	1 or 3 Minutes	Sets the duration that the camera will record before creating a new clip
Volume	Off, Low, Mid, High	Controls the sound level of the inbuilt speaker
G-Sensor	Off, High, Mid, Low	The G-Sensor monitors your vehicle against impact. The dash camera will automatically lock the recording in the event of a collision. Turn off or adjust the sensitivity of the built in G- Sensor
Parkmode	On, Off	Records 60 seconds of footage if activity is detected while parked Default: Off
Adjust time	Day, Month, Year	Adjusts the time on time stamp
Format Micro SD Card	Formats the Micro SD card.	Deletes all recorded data off the Micro SD Card
Wi-Fi settings	N/A	Changes the Dash Camera Wi-Fi name and password from default
Factory settings	N/A	Restores factory settings
Help	N/A	FAQ
About DVR	N/A	Firmware version

## 12.0 DRIVER MONITORING SYSTEM

Turning on this function will provide the following alerts:

ACTION	VOICE ALERT
When the camera detects the driver's eyes are closed for more than 1.5 seconds	It appears you are tired. Please stop driving and rest.
When the camera detects the driver is looking sideways for more than 3 seconds	Please look ahead and drive safely.
When the camera detects the driver is placing a cigarette in their mouth	Please don't smoke while you're driving, and stay safe.
When the camera detects a mobile phone is next to the driver's ear for more than 2 seconds.	Please don't make phone calls while driving, and stay safe.

### 13.0 WARRANTY TERMS AND CONDITIONS

Our goods come with guarantees that cannot be excluded under the Australian Consumer Law. You are entitled to a replacement or refund for a major failure and for compensation for any other reasonably foreseeable loss or damage. You are also entitled to have the goods repaired or replaced if the goods fail to be of acceptable quality and the failure does not amount to a major failure.

This warranty is provided in addition to your rights under the Australian Consumer Law. Directed Electronics Australia Pty Ltd (Directed Electronics) warrants that this product is free from defects in material and workmanship for a period of 12 months from the date of purchase or for the period stated on the packaging. This warranty is only valid where you have used the product in accordance with any recommendations or instructions provided by Directed Electronics.

This warranty excludes defects resulting from alterations of the product, accident, misuse, abuse or neglect. In order to claim the warranty, you must return the product to the retailer from which it was purchased or if that retailer is part of a national network, a store within that chain, along with satisfactory proof of purchase. The retailer will then return the goods to Directed Electronics.

Directed Electronics will repair, replace or refurbish the product at its discretion. The retailer will contact you when the product is ready for collection. All costs involved in claiming this warranty, including the cost of the retailer sending the product to Directed Electronics, will be borne by you.

**Email:** [info@nanocamplus.com.au](mailto:info@nanocamplus.com.au)

**Ph:** +61 03 8331 4800

## **INDEMNITY**

You agree to defend, indemnify and hold harmless Nanocam Plus and its subsidiaries and affiliates from and against any and all claims, proceedings, injuries, liabilities, losses, costs and expenses (including reasonable legal fees), including but not limited to, claims alleging negligence, invasion of privacy, copyright infringement and/or trademark infringement against Nanocam Plus and its subsidiaries and affiliates, relating to or arising out of your breach of any provision of these terms, your misuse of Nanocam Plus products or its services, or your unauthorised modification or alteration of products or software.

## **WARRANTY AND WARRANTY DISCLAIMER**

Nanocam Plus has a limited warranty on whereby Nanocam Plus warrants to you and only to you that this Nanocam Plus product will be free from defects in materials and workmanship for one (1) year from the date of your purchase (unless a longer warranty period is required by law). The specifics of this Nanocam Plus limited warranty are covered in this manual. To the extent possible under governing law, other than the above product warranty for the Nanocam Plus product, you understand and agree that the Nanocam Plus products and services are provided on an "as is" and "as available" basis. Nanocam Plus makes no warranty that the Nanocam Plus products and services will meet your requirements or that use of the Nanocam Plus products and services will be uninterrupted, timely, secure or error-free nor does Nanocam Plus make any warranty as to the accuracy or reliability of any information obtained through Nanocam Plus (including third party content), that any defects in Nanocam Plus products and services will be corrected or that Nanocam Plus products or services will be compatible

with any other specific hardware or service. Further, Nanocam Plus does not warrant that Nanocam Plus products or services or Nanocam Plus servers will provide you with data and content are free of viruses or other harmful components. Nanocam Plus also assumes no responsibility for and shall not be liable for any damages caused by viruses that may infect your Nanocam Plus product or software. In the event of any loss, damage or injury, you will not look to Nanocam Plus to compensate you or anyone else. You release and waive for yourself and your insurer all subrogation and other rights to recover against Nanocam Plus arising as a result of the payment of any claim for loss, damage or injury. Nanocam Plus equipment and services do not cause and cannot eliminate occurrences of certain events and Nanocam Plus makes no guarantee or warranty, including any implied warranty of merchantability or fitness for a particular purpose or that Nanocam Plus equipment and services provided will detect or avert such incidents or their consequences. Nanocam Plus does not undertake any risk that you or property, or the person or property of others, may be subject to injury or loss if such an event occurs. The allocation of such risks remains with you, not Nanocam Plus. Other than the above product warranty for Nanocam Plus products, its suppliers disclaim all warranties of any kind, whether express, implied, or statutory, regarding Nanocam Plus products and services, including any implied warranty of title, merchantability, fitness for a particular purpose, or non-infringement of third party rights. Because some jurisdictions do not permit the exclusion of implied warranties, the last sentence of this section may not apply to you. Nanocam Plus hereby further expressly disclaims all liability for claims for service failures that are due to normal product wear, product misuse, abuse, product modification, improper product selection or you noncompliance with all applicable federal, state or local laws.

This warranty and warranty disclaimer give you specific legal rights, and you may have other rights that vary by state, province or country. Other than as permitted by law, Nanocam Plus does not exclude, limit or suspend other rights you have, including those that may arise from the non-conformity of a sales contract. For a full understanding of your rights, you should consult the laws of your state, province, or country. For our Australian customers: please note that this warranty is in addition to any statutory rights in Australia in relation to your goods which, pursuant to the Australian Consumer Law, cannot be excluded.

#### **LIMITATIONS OF NANOCAM PLUS LIABILITY**

Under no circumstances will Nanocam Plus be liable in any way for any content, including, but not limited to, the loss of content, any errors or omissions in any content, or any loss or damage of any kind incurred in connection with use of or exposure to any content posted, emailed, accessed, transmitted, or otherwise made available via Nanocam Plus. Nanocam Plus liability for damages, especially for breach of duty or obligation, delay in performance, non-performance, or malperformance shall be precluded, except when these are due to negligent breaches of any significant contractual duty or obligation on the part of Nanocam Plus. Any liability for negligence is limited to direct losses usually and typically foreseeable in such case. Should the claim for damages be based on wilful or grossly negligent breach of contractual duty or obligation on the part of Nanocam Plus, the preclusion and limitation of liability mentioned in the preceding sentences will not apply. The preceding preclusion and limitation of liability will also not apply to claims for damages arising out of loss of life, bodily injury or health impacts for which Pixbee may be liable, or for non-contractual liability.



Some states and countries do not allow the exclusion or limitation of incidental or consequential damages, so the above limitation or exclusion may not apply to you. Additionally, this provision is not intended to limit Nanocam Plus' liability in the event of Nanocam Plus' wilful or intentional misconduct.

## 14.0 NOTES

---

---

---

---

---

---

---

---

---

---

---

---

---

---

---

---

**Your Safety.** Our Priority



All Images, Information and Content are Copyright © 2022  
Directed Electronics Australia Pty Ltd. All Rights Reserved.

**DIRECTED**

[www.directed.com.au](http://www.directed.com.au)  
[www.directed.co.nz](http://www.directed.co.nz)