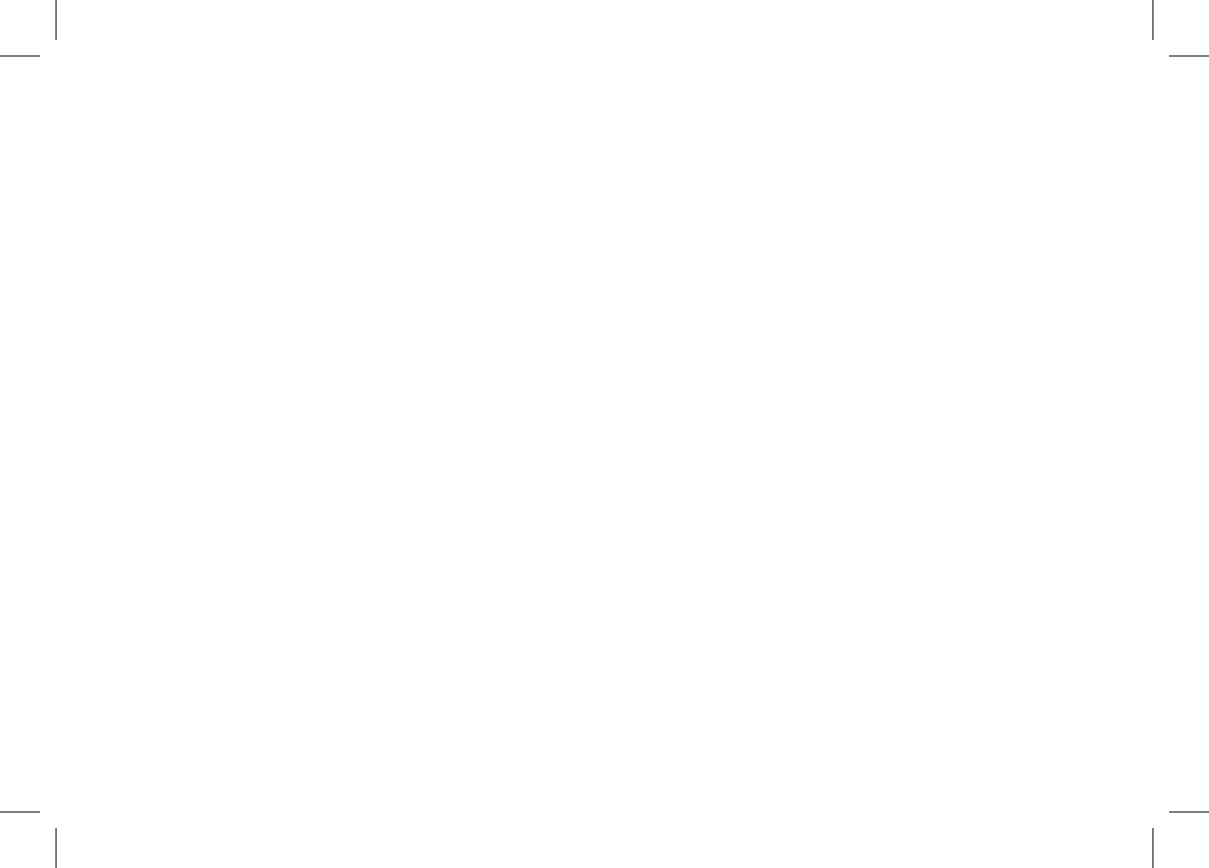




4.3" Mirror Monitor  
With Wireless Reverse Camera Kit



## CONTENTS

<b>1.0</b>	<b>PACKAGE CONTENTS</b> .....	<b>5</b>
<b>2.0</b>	<b>SPECIFICATIONS</b> .....	<b>6</b>
<b>3.0</b>	<b>WIRING DIAGRAM</b> .....	<b>7</b>
3.1	Wiring Installation.....	8
<b>4.0</b>	<b>LICENCE PLATE MOUNTING</b> .....	<b>9</b>
<b>5.0</b>	<b>STANDALONE MOUNT</b> .....	<b>10</b>
<b>6.0</b>	<b>INSTALLING THE MIRROR MONITOR</b> .....	<b>12</b>
<b>7.0</b>	<b>INSTALLATION DIAGRAM</b> .....	<b>12</b>
7.1	Activating the Camera .....	13
<b>8.0</b>	<b>TROUBLESHOOTING</b> .....	<b>13</b>
<b>9.0</b>	<b>MAINTENANCE</b> .....	<b>13</b>
<b>10.0</b>	<b>WARRANTY TERMS AND CONDITIONS</b> .....	<b>14</b>
<b>11.0</b>	<b>NOTES</b> .....	<b>20</b>

Thank you for purchasing the Nanocam Plus 4.3" Mirror Monitor With Wireless Reverse Camera Kit. We are certain that our product will give you trouble-free operation while providing you with a safety feature that enhances your driving experience. Our products, like most after-market safety enhanced devices, are designed to assist and aid the driver, not to replace the manual function of the person operating the vehicle.

For the latest manual and product updates, please visit our website at **[www.nanocamplus.com.au](http://www.nanocamplus.com.au)** or **[www.nanocamplus.co.nz](http://www.nanocamplus.co.nz)**

#### **DISCLAIMER**

The Nanocam Plus 4.3" Mirror Monitor With Wireless Reverse Camera Kit is designed as a driver assistance device. Although this is a visual aid and will allow you to view what is behind the vehicle, it does not remove the responsibility of driving the vehicle from the driver. The legal responsibility and safe driving practise remains with the driver at all times. You have purchased this product with the understanding that its use is as an aid only. We highly recommend that you have this product professionally installed to ensure that it will provide the functions it is set out to perform.

## **1.0 PACKAGE CONTENTS**

- 4.3" Clip-On Mirror Monitor x1
- Rear Camera x1
- Licence Plate Mount x1
- Standalone Mount x1
- 12V/24V Adaptor Cable x1
- User Manual x1

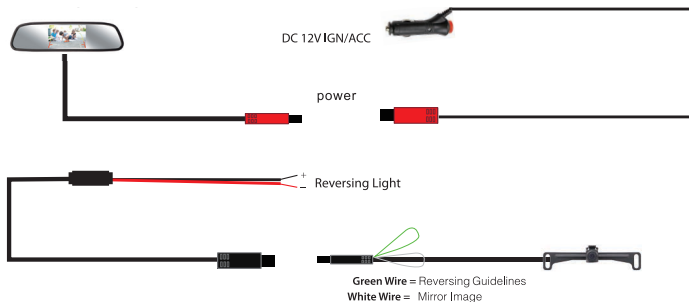
### **IMPORTANT NOTICE**

1. Please read this manual carefully before using the product.
2. This product is for use with vehicles with a 12V/24V DC input.
3. The Mirror Monitor power supply is through the vehicle's 12V/24V port while the Rear Camera power supply is derived from the reversing light circuit.
4. The connection between the Mirror Monitor and the Rear Camera is wireless.
5. Please install this product properly and professionally.
6. Please perform tests after finishing the installation.
7. Specifications subject to change without prior notice.

## 2.0 SPECIFICATIONS

MIRROR MONITOR		REAR CAMERA	
<b>Screen Size</b>	4.3" HD screen (16:9 aspect ratio)	<b>Resolution</b>	480 TV lines
<b>Clip-on original mirror</b>	Yes	<b>Effective pixels</b>	648(H) x 520(V)
<b>Power supply</b>	9-24V DC	<b>Power supply</b>	9-24V DC
<b>Wireless connection</b>	2.4GHz frequency	<b>Operating temperature</b>	-20°C to 70°C
<b>Screen resolution</b>	480(W) x RGB 272(H)	<b>Viewing angle</b>	140°
<b>Power</b>	<3W	<b>Minimum illumination</b>	0.2 Lux
<b>Video format</b>	PAL/NTSC compatible	<b>Waterproof rating</b>	IP68
<b>Wireless range</b>	Up to 60m	<b>Mirror image switching</b>	Yes
		<b>Reversing guidelines</b>	Yes

### 3.0 WIRING DIAGRAM



#### FRONT VIEW OPTION:

The NCP-MIR43W also supports front view application. For front view application, you can cut the thin **WHITE** wire near the camera lead and restart power to see the non-mirror image.

#### REVERSING GUIDELINES OPTION:

The NCP-MIR43W comes with reversing guidelines. To remove the reversing guidelines, you can cut the thin **GREEN** wire near the camera lead and restart power to show the screen without the reversing guidelines.

### 3.1 WIRING INSTALLATION

1. Connect the RED wire of the Camera Power Harness to the wire that supplies power to the reversing light globe (when the car is put into reverse). Use a suitable splicing/crimp connector (scotch lock type) or strip connector. This connection can also be soldered, making sure to insulate the joint with electrical insulation when done.
2. After you have insulated the joint, you can connect the power harness to the camera.

#### NOTES:

- For CANBUS vehicles, a CANBUS filter should be used to filter noise and flicker on the screen. (Not supplied)
  - Please check the specifications of your vehicle to confirm whether it has a CANBUS system.
3. Some cars that run LED or computer controlled lighting systems may not deliver enough voltage to run the camera. If the voltage at the reversing wire light is less than +12 volts it may be necessary to use a relay to supply power to the transmitter harness from the wiring in the front of the car. In this case the reversing light only needs to trigger the relay. Make sure that you do not drill holes in panels that have an opposite face visible from outside the car, such as guard panels.



4. Connect the black wire to a ground earth wire or to the body of the car using the steel of the car body behind the kick trim as an earth. In this case, drill a small hole and connect the wire using a suitable ring terminal. Scrape off paint around the hole to ensure good earth.

#### 4.0 LICENCE PLATE MOUNTING

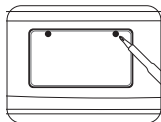


FIG 1

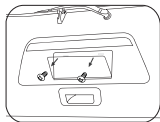


FIG 2

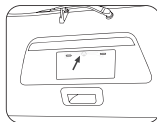


FIG 3

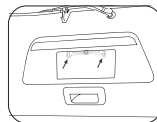


FIG 4

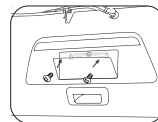


FIG 5

1. Remove the rear licence plate from the vehicle **(FIG 1 and 2)** by undoing the bolts/screws.
2. With the licence plate off, check if there is a pre-existing hole through which the cables from the camera can be passed through to the boot of the vehicle **(FIG 3)**. If there are no pre-existing holes, carefully drill a hole of sufficient diameter to allow the cables to be passed into the interior of the vehicle (through a rubber grommet) and seal the hole with silicone to avoid water leakage.

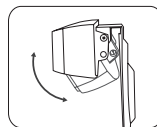


FIG 6

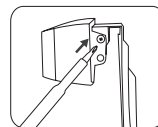


FIG 7

3. Carefully align the bracket arms so that the top edge of the arms align to the top edge of where the licence plate would sit and hold it in place making sure that the two holes in the mounting bracket align with the mounting holes of the licence plate **(FIG 4)**.
4. Refit the licence plate over the camera bracket using the original bolts/screw **(FIG 5)**.
5. You can adjust the angle of the camera by moving the camera up and down, and loosen and tighten the screws to fix the desired angle **(FIG 6 and 7)**.

## 5.0 STANDALONE MOUNT

1. Remove the camera from the licence plate mount using a screw driver (not provided).
2. Attach the removed camera to the standalone mount using the screws removed from the licence plate mount.
3. Select a flat and centred location near the licence plate lamp at the rear of the vehicle to mount the camera.



Suggested location  
to mount camera

\*Camera  
image only for  
reference



## IMPORTANT

When selecting the location, it is highly recommended that the image transmitted by the camera show the rear bumper and area behind the vehicle.

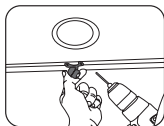


FIG 1

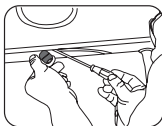


FIG 2

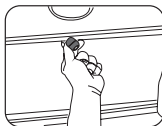


FIG 3



FIG 4

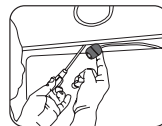


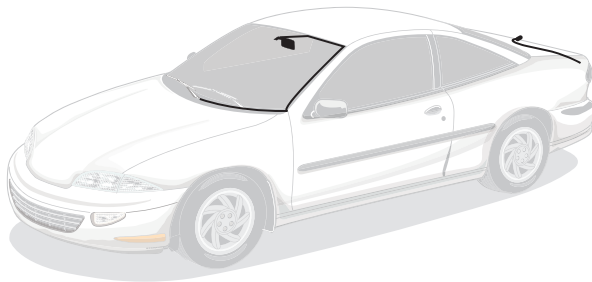
FIG 5

1. Attach tape to the bracket of the camera, and drill a small hole for the first screw **(FIG 1)**.
2. Use a screw driver to fix the first screw, but do not tighten it yet **(FIG 2)**.
3. Insert camera wire through newly drilled hole and mount securely in place **(FIG 3)**.
4. Mark the position suitable for the second screw and drill a small hole for it **(FIG 4)**.
5. Fix the second screw and tighten both screws **(FIG 5)**.

## 6.0 INSTALLING THE MIRROR MONITOR

1. Place the cable over the front of the mirror monitor so that it does not get caught between the mirror monitor and your vehicle's rear view mirror during installation.
2. Place the clips at the top of the mirror monitor over the top of the existing rear view mirror.
3. Place your thumbs on the front of the mirror monitor to hold the unit in place, and use your index fingers to push the bottom clips down over the bottom of the mirror monitor.
4. Push the mirror monitor into place ensuring that the mirror monitor is secured.

## 7.0 INSTALLATION DIAGRAM



## 7.1 ACTIVATING THE CAMERA

1. Apply the parking brakes.
2. Turn on the ignition.
3. Shift into reverse gear.
4. Image should appear on the mirror monitor.

## 8.0 TROUBLESHOOTING

PROBLEM	SOLUTION
"No Signal" appears while reversing	1. Check video input connections 2. Check rear camera power connections
Video image is not sharp	Check camera lens for debris

## 9.0 MAINTENANCE

Always keep the rear camera free of dirt and mud. Clean the rear camera with a soft, moist cloth.

## **10.0 WARRANTY TERMS AND CONDITIONS**

Our goods come with guarantees that cannot be excluded under the Australian Consumer Law. You are entitled to a replacement or refund for a major failure and for compensation for any other reasonably foreseeable loss or damage. You are also entitled to have the goods repaired or replaced if the goods fail to be of acceptable quality and the failure does not amount to a major failure.

This warranty is provided in addition to your rights under the Australian Consumer Law. Directed Electronics Australia Pty Ltd (Directed Electronics) warrants that this product is free from defects in material and workmanship for a period of 12 months from the date of purchase or for the period stated on the packaging. This warranty is only valid where you have used the product in accordance with any recommendations or instructions provided by Directed Electronics.

This warranty excludes defects resulting from alterations of the product, accident, misuse, abuse or neglect. In order to claim the warranty, you must return the product to the retailer from which it was purchased or if that retailer is part of a national network, a store within that chain, along with satisfactory proof of purchase. The retailer will then return the goods to Directed Electronics.

Directed Electronics will repair, replace or refurbish the product at its discretion. The retailer will contact you when the product is ready for collection. All costs involved in claiming this warranty, including the cost of the retailer sending the product to Directed Electronics, will be borne by you.

**Email:** [info@nanocamplus.com.au](mailto:info@nanocamplus.com.au)

**Ph:** +61 03 8331 4800

## **INDEMNITY**

You agree to defend, indemnify and hold harmless Nanocam Plus and its subsidiaries and affiliates from and against any and all claims, proceedings, injuries, liabilities, losses, costs and expenses (including reasonable legal fees), including but not limited to, claims alleging negligence, invasion of privacy, copyright infringement and/or trademark infringement against Nanocam Plus and its subsidiaries and affiliates, relating to or arising out of your breach of any provision of these terms, your misuse of Nanocam Plus products or its services, or your unauthorised modification or alteration of products or software.

## **WARRANTY AND WARRANTY DISCLAIMER**

Nanocam Plus has a limited warranty on whereby Nanocam Plus warrants to you and only to you that this Nanocam Plus product will be free from defects in materials and workmanship for one (1) year from the date of your purchase (unless a longer warranty period is required by law). The specifics of this Nanocam Plus limited warranty are covered in this manual. To the extent possible under governing law, other than the above product warranty for the Nanocam Plus product, you understand and agree that the Nanocam Plus products and services are provided on an "as is" and "as available" basis. Nanocam Plus makes no warranty that the Nanocam Plus products and services will meet your requirements or that use of the Nanocam Plus products and services will be uninterrupted, timely, secure or error-free nor does Nanocam Plus make any warranty as to the accuracy or reliability of any information obtained through Nanocam Plus (including third party content), that any defects in Nanocam Plus products and services will be corrected or that Nanocam Plus products or services will be compatible with any other specific hardware or service. Further, Nanocam Plus does not warrant that Nanocam Plus products or services or Nanocam Plus servers will provide you with data and content are free of viruses or other harmful components. Nanocam Plus also assumes no responsibility for and shall not be liable for any damages caused by viruses that may infect your Nanocam Plus product or software. In the event of any loss, damage or injury, you will not look to Nanocam Plus to compensate you or anyone else. You release and waive for yourself and your insurer all subrogation and other rights to recover against Nanocam Plus arising as a result of the payment of any claim for loss, damage or injury. Nanocam Plus equipment and services do not cause and cannot eliminate occurrences of



certain events and Nanocam Plus makes no guarantee or warranty, including any implied warranty of merchantability or fitness for a particular purpose or that Nanocam Plus equipment and services provided will detect or avert such incidents or their consequences. Nanocam Plus does not undertake any risk that you or property, or the person or property of others, may be subject to injury or loss if such an event occurs. The allocation of such risks remains with you, not Nanocam Plus. Other than the above product warranty for Nanocam Plus products, its suppliers disclaim all warranties of any kind, whether express, implied, or statutory, regarding Nanocam Plus products and services, including any implied warranty of title, merchantability, fitness for a particular purpose, or non-infringement of third party rights. Because some jurisdictions do not permit the exclusion of implied warranties, the last sentence of this section may not apply to you. Nanocam Plus hereby further expressly disclaims all liability for claims for service failures that are due to normal product wear, product misuse, abuse, product modification, improper product selection or you noncompliance with all applicable federal, state or local laws.

This warranty and warranty disclaimer give you specific legal rights, and you may have other rights that vary by state, province or country. Other than as permitted by law, Nanocam Plus does not exclude, limit or suspend other rights you have, including those that may arise from the non-conformity of a sales contract. For a full understanding of your rights, you should consult the laws of your state, province, or country. For our Australian customers: please note that this warranty is in addition to any statutory rights in Australia in relation to your goods which, pursuant to the Australian Consumer Law, cannot be excluded.

## **LIMITATIONS OF NANOCAM PLUS LIABILITY**

Under no circumstances will Nanocam Plus be liable in any way for any content, including, but not limited to, the loss of content, any errors or omissions in any content, or any loss or damage of any kind incurred in connection with use of or exposure to any content posted, emailed, accessed, transmitted, or otherwise made available via Nanocam Plus. Nanocam Plus liability for damages, especially for breach of duty or obligation, delay in performance, non-performance, or malperformance shall be precluded, except when these are due to negligent breaches of any significant contractual duty or obligation on the part of Nanocam Plus. Any liability for negligence is limited to direct losses usually and typically foreseeable in such case. Should the claim for damages be based on wilful or grossly negligent breach of contractual duty or obligation on the part of Nanocam Plus, the preclusion and limitation of liability mentioned in the preceding sentences will not apply. The preceding preclusion and limitation of liability will also not apply to claims for damages arising out of loss of life, bodily injury or health impacts for which Nanocam Plus may be liable, or for non-contractual liability.

Some states and countries do not allow the exclusion or limitation of incidental or consequential damages, so the above limitation or exclusion may not apply to you. Additionally, this provision is not intended to limit Nanocam Plus' liability in the event of Nanocam Plus' wilful or intentional misconduct.



## 11.0 NOTES

---

---

---

---

---

---

---

---

---

---



# Your Safety. Our Priority.

[www.nanocamplus.com.au](http://www.nanocamplus.com.au) | [www.nanocamplus.co.nz](http://www.nanocamplus.co.nz)



All Images, Information and Content are Copyright © 2023  
Directed Electronics Australia Pty Ltd. All Rights Reserved.

**DIRECTED**  
AUSTRALIA & NZ

[www.directed.com.au](http://www.directed.com.au)  
[www.directed.co.nz](http://www.directed.co.nz)